

CATALOGUE

Price list effective 1 February 2016



Quality products *mixed* with excellent service.



About MILCast

MILCast design, manufacture and supply precast concrete products for agricultural and commercial uses. Products include headwalls, culvert ends, pits, bay outlets (with aluminium door or rubber flap), rice stops, channel and bankless channel checks, rice flumes, grain/fertilizer bunker wall slabs and drop boxes.

Our pit products are one piece pours with no construction joints and come in a large range of standard sizes.

Our team can also design made to order structures based on your specific needs, including pipe brand selection and control door requirements.

MILCast products are produced by experienced staff under high quality, factory controlled conditions. We guarantee our products will remain structurally strong and are fire and weather resistant.

Ease of installation is an advantage of all MILCast products.

Contractors, engineers, irrigators and customers will benefit from shorter project times which will allow you to take advantage of good weather breaks for off-season works where ground water will not impact the project.

MILCast also offers excellent delivery services including crane hire and we deliver right to the site area on-farm (where possible).

MILCast is committed to ongoing product development to meet the changing needs of our customers.

MILCast is a business unit of Murray Irrigation Limited and is certified to ISO 9001:2008 Quality Standard, so you can be confident that you are dealing with a professional company that is experienced in complying with industry standards and meeting tight schedules.

Should the product you require not be listed in this catalogue please call us on T. 03 5888 3051 to discuss your requirements.



Call our **friendly team** on T. 03 5888 3051 for professional advice on the best products to suit your needs.



Contents

MILCast manufactured products

| | |
|--|----|
| Agricultural bankless channel check..... | 2 |
| Bay outlet..... | 2 |
| Channel check..... | 2 |
| Culvert end (head wall) x 750H..... | 3 |
| Culvert end (head wall) x 900H..... | 3 |
| Culvert end (head wall) x 1200H..... | 4 |
| Culvert end (head wall) x 1500H..... | 4 |
| Culvert end (head wall) x 1800H..... | 5 |
| Culvert end (head wall) x 2100H..... | 5 |
| Drainage inlet..... | 5 |
| Drop box..... | 6 |
| Pads..... | 6 |
| Pipe ends..... | 6 |
| Pits and risers..... | 7 |
| Pits and risers continued..... | 8 |
| Pits and risers continued..... | 9 |
| Rice flumes..... | 9 |
| Road culverts..... | 9 |
| Other..... | 10 |

Non MILCast manufactured products

| | |
|-----------------------------------|----|
| Doors..... | 10 |
| Doors continued..... | 11 |
| Pipes..... | 11 |
| Pit covers and trash screens..... | 12 |
| Other..... | 12 |

**Agricultural bankless
channel check - door**

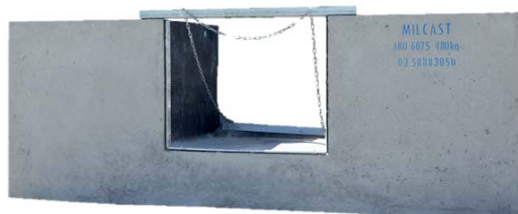


MILCast manufactured and stocked items

Agricultural Bankless Channel Check

| STOCK CODE | DESCRIPTION | WEIGHT | PRICE (ex GST) |
|------------|----------------------------|--------|----------------|
| ABCC7590D | BANKLESS 750H X 900W-DOOR | 760KG | \$567 |
| ABCC9090D | BANKLESS 900H x 900W- DOOR | 810KG | \$616 |

Bay outlet with rubber flap



Bay Outlet

| STOCK CODE | DESCRIPTION | WEIGHT | PRICE (ex GST) |
|------------|------------------------------------|--------|----------------|
| ABO40120D | BAY OUTLET 400h x 1200w 12mg DOOR | 420KG | \$352 |
| ABO40120R | BAYOUTLET 400h x 1200w RUBBER FLAP | 420KG | \$396 |
| ABO4060D | BAY OUTLET 400x600 6mg DOOR | 320KG | \$281 |
| ABO4060R | BAY OUTLET 400 x 600 RUBBER FLAP | 320KG | \$330 |
| ABO4090D | BAY OUTLET 400x900 9mg DOOR | 360KG | \$314 |
| ABO4090R | BAY OUTLET 400 x 900 RUBBER FLAP | 360KG | \$363 |
| ABO6075D | BAY OUTLET 600x750 12mg DOOR | 460KG | \$402 |
| ABO6075R | BAY OUTLET 600 x 750 RUBBER FLAP | 460KG | \$479 |

Channel check with door



Channel Check

| STOCK CODE | DESCRIPTION | WEIGHT | PRICE (ex GST) |
|------------|---------------------------------|--------|----------------|
| ACC7560D | CHANNEL CHK 750H x 600W - DOOR | 760KG | \$605 |
| ACC9090D | CHANNEL CHK 900H X 900W - DOOR | 1440KG | \$990 |
| ACC90120D | CHANNEL CHK 900H X 1200W - DOOR | 1350KG | \$1,045 |

750H Culvert end - door



| Culvert End (Head Wall) X 750H | | | |
|---------------------------------------|-------------------------|--------|----------------|
| STOCK CODE | DESCRIPTION | WEIGHT | PRICE (ex GST) |
| ACS300D | 300 CULEND x 750H- DOOR | 470KG | \$363 |
| ACS375D | 375 CULEND x 750H- DOOR | 460KG | \$363 |
| ACS450D | 450 CULEND x 750H- DOOR | 440KG | \$363 |

900H Culvert end - dual control



| Culvert End (Head Wall) X 900H | | | |
|---------------------------------------|------------------------------|--------|----------------|
| STOCK CODE | DESCRIPTION | WEIGHT | PRICE (ex GST) |
| ACL300D | 300 CULEND x 900H- DOOR | 680KG | \$473 |
| ACL300DC | 300 CULEND x 900H- DUAL CTRL | 620KG | \$473 |
| ACL300P | 300 CULEND x 900H- PLAIN | 500KG | \$286 |
| ACL375D | 375 CULEND x 900H- DOOR | 670KG | \$473 |
| ACL375DC | 375 CULEND x 900H- DUAL CTRL | 610KG | \$473 |
| ACL375P | 375 CULEND x 900H- PLAIN | 490KG | \$286 |
| ACL450D | 450 CULEND x 900H- DOOR | 660KG | \$473 |
| ACL450DC | 450 CULEND x 900H- DUAL CTRL | 600KG | \$473 |
| ACL450P | 450 CULEND x 900H- PLAIN | 480KG | \$286 |
| ACL525D | 525 CULEND x 900H- DOOR | 640KG | \$473 |
| ACL525DC | 525 CULEND x 900H- DUAL CTRL | 580KG | \$473 |
| ACL525P | 525 CULEND x 900H- PLAIN | 460KG | \$286 |
| ACL600D | 600 CULEND x 900H- DOOR | 620KG | \$473 |
| ACL600DC | 600 CULEND x 900H- DUAL CTRL | 560KG | \$473 |
| ACL600P | 600 CULEND x 900H- PLAIN | 450KG | \$286 |

1200H Culvert end - dual control



| Culvert End (Head Wall) X 1200H | | | |
|--|--------------------------------|--------|----------------|
| STOCK CODE | DESCRIPTION | WEIGHT | PRICE (ex GST) |
| ACH300D | 300 CULEND x 1200H- DOOR | 800KG | \$545 |
| ACH300DC | 300 CULEND x 1200H- DUAL CTRL | 1200KG | \$545 |
| ACH300P | 300 CULEND x 1200H- PLAIN | 660KG | \$369 |
| ACH375D | 375 CULEND x 1200H- DOOR | 790KG | \$545 |
| ACH375DC | 375 CULEND x 1200H- DUAL CTRL | 1200KG | \$545 |
| ACH375P | 375 CULEND x 1200H- PLAIN | 650KG | \$369 |
| ACH450D | 450 CULEND x 1200H- DOOR | 780KG | \$545 |
| ACH450DC | 450 CULEND x 1200H- DUAL CTRL | 1200KG | \$545 |
| ACH450P | 450 CULEND x 1200H- PLAIN | 640KG | \$369 |
| ACH525D | 525 CULEND x 1200H- DOOR | 760KG | \$545 |
| ACH525DC | 525 CULEND x 1200H- DUAL CTRL | 1200KG | \$545 |
| ACH525P | 525 CULEND x 1200H- PLAIN | 580KG | \$369 |
| ACH600D | 600 CULEND x 1200H- DOOR | 740KG | \$545 |
| ACH600DC | 600 CULEND x 1200H- DUAL CTRL | 1200KG | \$545 |
| ACH600P | 600 CULEND x 1200H- PLAIN | 600KG | \$369 |
| Culvert End (Head Wall) X 1500H | | | |
| STOCK CODE | DESCRIPTION | WEIGHT | PRICE (ex GST) |
| ACT300DC | 300 CULEND x 1500H - DUAL CTRL | 1280KG | \$858 |
| ACT375DC | 375 CULEND x 1500H - DUAL CTRL | 1250KG | \$858 |
| ACT450DC | 450 CULEND x 1500H - DUAL CTRL | 1220KG | \$858 |
| ACT525DC | 525 CULEND x-1500H - DUAL CTRL | 1190KG | \$858 |
| ACT600DC | 600 CULEND x 1500H – DUAL CTRL | 1163KG | \$858 |
| ACT675DC | 675 CULEND x 1500H - DUAL CTRL | 1120KG | \$858 |
| ACT750DC | 750 CULEND x 1500H – DUAL CTRL | 1090KG | \$858 |
| ACT900DC | 900 CULEND x 1500H - DUAL CTRL | 1050KG | \$858 |
| ACT300P | 300 CULEND x 1500H - PLAIN | 1260KG | \$622 |
| ACT375P | 375 CULEND x 1500H - PLAIN | 1230KG | \$622 |
| ACT450P | 450 CULEND - 1500H - PLAIN | 1200KG | \$622 |
| ACT525P | 525 CULEND -1500H - PLAIN | 1160KG | \$622 |
| ACT600P | 600 CULEND x 1500H- PLAIN | 1136KG | \$622 |
| ACT675P | 675 CULEND x1500H - PLAIN | 1150KG | \$622 |
| ACT750P | 750 CULEND x 1500H- PLAIN | 1090KG | \$622 |
| ACT900P | 900 CULEND x 1500H- PLAIN | 1030KG | \$622 |
| DL1 | PORTABLE DOOR LIFTER | | \$88 |

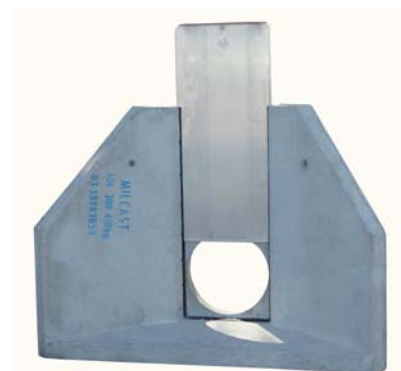
1800H Culvert end - plain



| Culvert End (Head Wall) X 1800H | | | |
|--|---------------------------|--------|----------------|
| STOCK CODE | DESCRIPTION | WEIGHT | PRICE (ex GST) |
| ACB450P | 450 CULEND 1800H - PLAIN | 2450KG | \$1,210 |
| ACB525P | 525 CULEND 1800H - PLAIN | 2350KG | \$1,210 |
| ACB600P | 600 CULEND 1800H - PLAIN | 2250KG | \$1,210 |
| ACB750P | 750 CULEND 1800H - PLAIN | 2150KG | \$1,210 |
| ACB900P | 900 CULEND 1800H - PLAIN | 2070KG | \$1,210 |
| ACB1050P | 1050 CULEND 1800H - PLAIN | 1970KG | \$1,210 |
| ACB1200P | 1200 CULEND 1800H - PLAIN | 1880KG | \$1,210 |

| Culvert End (Head Wall) X 2100H | | | |
|--|-----------------------------|--------|----------------|
| STOCK CODE | DESCRIPTION | WEIGHT | PRICE (ex GST) |
| ACX900P | 900 CULEND x 2100H - PLAIN | 3300KG | \$1,650 |
| ACX1050P | 1050 CULEND x 2100H - PLAIN | 3170KG | \$1,650 |
| ACX1200P | 1200 CULEND x 2100H - PLAIN | 3060KG | \$1,650 |
| ACX1350P | 1350 CULEND x 2100H - PLAIN | 2920KG | \$1,650 |
| ACX1500P | 1500 CULEND x 2100H - PLAIN | 2760KG | \$1,650 |

Drainage inlet



| Drainage Inlet | | | |
|-----------------------|-------------------------------|--------|----------------|
| STOCK CODE | DESCRIPTION | WEIGHT | PRICE (ex GST) |
| ADI300D | 300 DRAIN INLET x 900H - DOOR | 420KG | \$319 |

Drop box with winch control



| Drop Box | | | |
|-----------------|----------------------------|--------|----------------|
| STOCK CODE | DESCRIPTION | WEIGHT | PRICE (ex GST) |
| DBHI | 1050H RECTANGULAR DROPBOX | 660KG | \$600 |
| DBLO | 900H RECTANGULAR DROP BOX | 630KG | \$550 |
| DBL | 1320H RECTANGULAR DROP BOX | 1200KG | \$660 |
| WDB | WIDE DROP BOX | 1700KG | \$770 |
| WC | WINCH CONTROL | | \$160 |

| Pads | | | |
|-------------|---|--------|----------------|
| STOCK CODE | DESCRIPTION | WEIGHT | PRICE (ex GST) |
| PAD 1 | CONCRETE PADS 450x225x75mm | 19KG | \$11 |
| PAD 2 | CONCRETE PADS 450x450x75mm | 37KG | \$17 |
| PAD 3 | CONCRETE PADS 900x300x75mm | 49KG | \$22 |
| PAD HW | CONCRETE PADS 600x600x65mm – Hot Water | 55KG | \$22 |
| PAD 2GC | CONCRETE PADS 750x350x75mm – 2 x Gas Cylinder | 42KG | \$22 |
| PAD 4 | CONCRETE PADS 800x800x50mm | 77KG | \$44 |
| SWS | STORM WATER SINK | 55KG | \$39 |

Pipe end



| Pipe End | | | |
|-----------------|---------------------------|--------|----------------|
| STOCK CODE | DESCRIPTION | WEIGHT | PRICE (ex GST) |
| APEL300D | 300 PIPEEND x 900H - DOOR | 270KG | \$297 |
| APEL375D | 375 PIPEEND x 900H - DOOR | 270KG | \$297 |
| APEL450D | 450 PIPEEND x 900H - DOOR | 270KG | \$297 |
| APEL525D | 525 PIPEEND x 900H - DOOR | 270KG | \$297 |
| APEL600D | 600 PIPEEND x 900H - DOOR | 270KG | \$297 |
| APES300D | 300 PIPEEND X 750H - DOOR | 110KG | \$193 |
| APES375D | 375 PIPEEND X 750H - DOOR | 110KG | \$193 |

Pits



| Pits and Risers | | | |
|------------------------|--------------------|---------------|-----------------------|
| STOCK CODE | DESCRIPTION | WEIGHT | PRICE (ex GST) |
| P110/1.3M | 1300H P110 PIT | 1.8T | \$1,155 |
| P110/1.6M | 1600H P110 PIT | 2.2T | \$1,320 |
| P110/1.9M | 1900H P110 PIT | 2.5T | \$1,705 |
| P110/2.2M | 2200H P110 PIT | 2.8T | \$1,870 |
| P110/2.5M | 2500H P110 PIT | 3.2T | \$2,145 |
| P110/2.8M | 2800H P110 PIT | 3.5T | \$2,310 |
| P110/3.1M | 3100H P110 PIT | 3.8T | \$2,530 |
| P110/3.4M | 3400H P110 PIT | 4.1T | \$2,750 |
| P110/R0.3M | 300H P110 RISER | 350KG | \$231 |
| P110/R0.6M | 600H P110 RISER | 700KG | \$457 |
| P110/R0.9M | 900H P110 RISER | 1.05T | \$688 |
| P110/R1.2M | 1200H P110 RISER | 1.4T | \$913 |
| P110/R1.5M | 1500H P110 RISER | 1.75T | \$1,155 |
| P110/R1.8M | 1800H P110 RISER | 2.1T | \$1,375 |
| P110/R2.1M | 2100H P110 RISER | 2.45T | \$1,628 |
| P110/R2.4M | 2400H P110 RISER | 2.8T | \$1,870 |
| P120/1.05M | 1050H P120 PIT | 2.6T | \$1,727 |
| P120/1.3M | 1300H P120 PIT | 3.1T | \$1,964 |
| P120/1.6M | 1600H P120 PIT | 3.7T | \$2,442 |
| P120/1.9M | 1900H P120 PIT | 4.3T | \$2,844 |
| P120/2.2M | 2200H P120 PIT | 4.9T | \$3,300 |
| P120/2.5M | 2500H P120 PIT | 5.5T | \$3,630 |
| P120/2.8M | 2800H P120 PIT | 6.1T | \$4,015 |
| P120/3.1M | 3100H P120 PIT | 6.7T | \$4,455 |
| P120/3.4M | 3400H P120 PIT | 7.3T | \$4,840 |
| P120/3.7M | 3700H P120 PIT | 8.0T | \$5,280 |
| P120/R0.3M | 300H P120 RISER | 600KG | \$396 |
| P120/R0.6M | 600H P120 RISER | 1.2T | \$803 |
| P120/R0.9M | 900H P120 RISER | 1.8T | \$1,210 |
| P120/R1.2M | 1200H P120 RISER | 2.4T | \$1,595 |
| P120/R1.5M | 1500H P120 RISER | 3.0T | \$1,980 |

| Pits and Risers continued | | | |
|----------------------------------|--------------------|---------------|-----------------------|
| STOCK CODE | DESCRIPTION | WEIGHT | PRICE (ex GST) |
| P120/R1.8M | 1800H P120 RISER | 3.6T | \$2,420 |
| P120/R2.1M | 2100H P120 RISER | 4.2T | \$2,805 |
| P120/R2.4M | 2400H P120 RISER | 4.8T | \$3,190 |
| P140/0.6M | 600H P140 PIT | | \$1,100 |
| P140/1.35M | 1350H P140 PIT | | \$2,255 |
| P140/1.6M | 1600H P140 PIT | 4.3T | \$2,860 |
| P140/1.9M | 1900H P140 PIT | 5.0T | \$3,300 |
| P140/2.2M | 2200H P140 PIT | 5.7T | \$3,795 |
| P140/2.5M | 2500H P140 PIT | 6.4T | \$4,290 |
| P140/2.8M | 2800H P140 PIT | 7.1T | \$4,730 |
| P140/3.1M | 3100H P140 PIT | 7.8T | \$5,280 |
| P140/3.4M | 3400H P140 PIT | 8.5T | \$5,720 |
| P140/3.7M | 3700H P140 PIT | 9.2T | \$6,160 |
| P140/R0.3M | 300H P140 RISER | 700KG | \$462 |
| P140/R0.6M | 600H P140 RISER | 1.35T | \$935 |
| P140/R0.9M | 900H P140 RISER | 2.0T | \$1,408 |
| P140/R1.2M | 1200H P140 RISER | 2.7T | \$1,848 |
| P140/R1.45M | 1450H P140 RISER | 3.35T | \$2,310 |
| P140/R1.75M | 1750H P140 RISER | 4.0T | \$2,475 |
| P170/1.9M | 1900H P170 PIT | 6.2T | \$4,180 |
| P170/2.2M | 2200H P170 PIT | 7.0T | \$4,730 |
| P170/2.5M | 2500H P170 PIT | 7.8T | \$5,170 |
| P170/2.8M | 2800H P170 PIT | 8.6T | \$5,720 |
| P170/3.1M | 3100H P170 PIT | 9.4T | \$6,270 |
| P170/3.4M | 3400H P170 PIT | 10.2T | \$6,820 |
| P170/3.7M | 3700H P170 PIT | 11.0T | \$7,370 |
| P170/R0.3M | 300H P170 RISER | 800KG | \$528 |
| P170/R0.6M | 600H P170 RISER | 1.6T | \$1,067 |
| P170/R1.2M | 1200H P170 RISER | 3.2T | \$2,145 |
| P200/1.9M | 1900H JUMBO PIT | 7.5T | \$5,060 |
| P200/2.2M | 2200H JUMBO PIT | 8.5T | \$5,720 |
| P200/2.5M | 2500H JUMBO PIT | 9.4T | \$6,380 |
| P200/2.8M | 2800H JUMBO PIT | 10.4T | \$7,040 |
| P200/3.1M | 3100H JUMBO PIT | 11.3T | \$7,700 |
| P200/3.4M | 3400H JUMBO PIT | 12.3T | \$8,360 |
| P200/3.7M | 3700H JUMBO PIT | 13.2T | \$9,020 |
| P200/R0.6M | 600H JUMBO RISER | 2T | \$1,353 |
| P200/R0.9M | 900H JUMBO RISER | 3T | \$2,035 |

| Pits and Risers continued | | | |
|---------------------------|-------------------|--------|----------------|
| STOCK CODE | DESCRIPTION | WEIGHT | PRICE (ex GST) |
| P200/R1.2M | 1200H JUMBO RISER | 4T | \$2,695 |
| P200/R1.5M | 1500H JUMBO RISER | 5T | \$3,245 |
| P260/2.1M | 2100H SUMO PIT | 11.2T | \$7,370 |
| P260/2.2M | 2200H SUMO PIT | 11.6T | \$7,645 |
| P260/2.3M | 2300H SUMO PIT | 12.0T | \$7,920 |
| P260/2.5M | 2500H SUMO PIT | 12.9T | \$8,690 |
| P260/2.8M | 2800H SUMO PIT | 14.1T | \$9,449 |
| P260/3.1M | 3100H SUMO PIT | 15.3T | \$10,182 |
| P260/3.3M | 3.300H SUMO PIT | 16T | \$10,670 |
| P260/R1.0M | 1000H SUMO RISER | 4.2T | \$2,805 |

Rice flume - dual control



| Rice Flumes | | | |
|-------------|---------------------------|--------|----------------|
| STOCK CODE | DESCRIPTION | WEIGHT | PRICE (ex GST) |
| FS1200 | FLAT STOP - RICE | 300KG | \$303 |
| RSF600 | RICE STOP FLUME 600Wx750H | 340KG | \$270 |
| RSF800 | RICE FLUME 760Wx800H | 500KG | \$320 |
| RSF900 | RICE FLUME 900Wx1000H | 620KG | \$369 |
| RSF900DC | RICE FLUME DUAL CONTROL | 1100KG | \$578 |

Road culvert



| Road Culverts | | | |
|---------------|---------------------------------|--------|----------------|
| STOCK CODE | DESCRIPTION | WEIGHT | PRICE (ex GST) |
| ARC300 | 300 ROAD CULVERT x 750H | 330KG | \$182 |
| ARC375 | 375 ROAD CULVERT x 750H | 330KG | \$182 |
| ARC450 | 450 ROAD CULVERT x 750H | 330KG | \$182 |
| RC300 | LOW PROFILE ROAD CULVERT x 600H | 330KG | \$182 |
| RC375 | LOW PROFILE ROAD CULVERT x 600H | 330KG | \$182 |

Water trough



| Other | | | |
|--------------|-------------------------------------|------|----------------|
| STOCK CODE | DESCRIPTION | | PRICE (ex GST) |
| C25 | P110 - PIT COVER - CONCRETE | N/A | \$330 |
| C29 | DRAINAGE SUMP (BIRDBATH) | N/A | \$143 |
| C38 | 1.3m STEPS | N/A | \$385 |
| WT1 | WATER TROUGH 5.5L WITH LID (1,000L) | 1.7T | \$1,100 |
| WT1/FV | 2' HP FLOW VALVE, ARM & FLOAT | N/A | \$100 |
| RWALL | RETAINER WALL | N/A | POA |
| SILOFT | SILO FOOTING | N/A | POA |
| SLAB | CONCRETE SLAB | N/A | POA |

Screw lift door



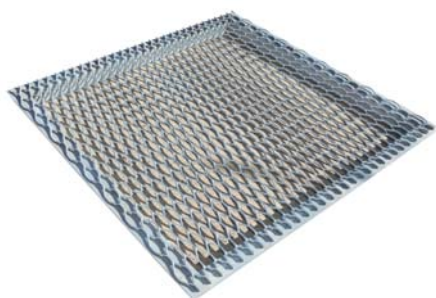
| Non MILCast manufactured - stocked items | | | |
|---|--------------------------------|-----|----------------|
| Doors | | | |
| STOCK CODE | DESCRIPTION | | PRICE (ex GST) |
| D01 | ACS ALUMINIUM DOOR | N/A | \$78 |
| D02 | ACL790 ALUMINIUM DOOR | N/A | \$121 |
| D04 | ACH790 ALUMINIUM DOOR | N/A | \$132 |
| D05 | ACH800 ALUMINIUM DOOR | N/A | \$132 |
| D06 | ACH810 AND APEH ALUMINIUM DOOR | N/A | \$132 |
| D07 | ACT ALUMINIUM DOOR | N/A | \$231 |
| D09 | ABO4060 ALUMINIUM DOOR | N/A | \$50 |
| D10 | ABO4090 ALUMINIUM DOOR | N/A | \$66 |
| D11 | ABO6075 ALUMINIUM DOOR | N/A | \$77 |
| D12 | ACC7560 AND ABCC7560 ALUMINIUM | N/A | \$77 |
| D13 | ACC9075 ALUMINIUM DOOR | N/A | \$83 |

| Doors continued | | | |
|-----------------|--------------------------|-----|----------------|
| STOCK CODE | DESCRIPTION | | PRICE (ex GST) |
| D14 | ACC9090 ALUMINIUM DOOR | N/A | \$127 |
| D16 | ABCC7590 ALUMINIUM DOOR | N/A | \$99 |
| D17 | ABCC9090 ALUMINIUM DOOR | N/A | \$132 |
| D18 | ABCC75120 ALUMINIUM DOOR | N/A | \$105 |
| D19 | ABCC90120 ALUMINIUM DOOR | N/A | \$121 |
| D20 | APES ALUMINIUM DOOR | N/A | \$61 |
| D21 | ADI ALUMINIUM DOOR | N/A | \$61 |
| D28 | ABO40120D ALUMIN DOOR | N/A | \$72 |
| D29 | FLATSTOP DOOR | N/A | \$77 |
| SLD | SCREW LIFT DOOR | N/A | POA |

| Pipes | | | |
|------------|---|--------|----------------|
| STOCK CODE | DESCRIPTION | WEIGHT | PRICE (ex GST) |
| SPC300 | 300 SP/C CONCRETE PIPE (4ML FLOW) | 210KG | \$121 |
| SPC375 | 375 SP/C CONCRETE PIPE (6ML FLOW) | 269KG | \$165 |
| SPC450 | 450 SP/C CONCRETE PIPE (9ML FLOW) | 422KG | \$237 |
| SPC525 | 525 SP/C CONCRETE PIPE (12ML FLOW) | 495KG | \$303 |
| SPC600 | 600 SP/C CONCRETE PIPE (15ML FLOW) | 606KG | \$363 |
| SPC675 | 675 SP/C CONCRETE PIPE (20ML FLOW) | 736KG | \$479 |
| SPC750 | 750 SP/C CONCRETE PIPE (24ML FLOW) | 892KG | \$550 |
| SPC900 | 900 SP/C CONCRETE PIPE (36ML FLOW) | 1336KG | \$825 |
| SPC1050 | 1050 SP/C CONCRETE PIPE (50ML FLOW) | 1717KG | \$1,089 |
| SPC1200 | 1200 SP/C CONCRETE PIPE | 2180KG | \$1,200 |
| SPC1350 | 1350 SP/C CONCRETE PIPE | 2700KG | \$1,470 |
| SPC1500 | 1500 SP/C CONCRETE PIPE | 3000KG | \$1,740 |
| SS300 | 300 SPIGOT PIPES (4ML FLOW) | 200KG | \$121 |
| SS375 | 375 SPIGOT PIPES (6ML FLOW) | 251KG | \$165 |
| SS450 | 450 SPIGOT PIPES (9ML FLOW) | 366KG | \$237 |
| SS525 | 525 SPIGOT PIPES (12ML FLOW) | 464KG | \$303 |
| SS600 | 600 SPIGOT PIPES (15ML FLOW) | 566KG | \$363 |
| SS675 | 675 SPIGOT PIPES (20ML FLOW) | 691KG | \$479 |
| SS750 | 750 SPIGOT PIPES (24ML FLOW) | 810KG | \$550 |
| SS900 | 900 SPIGOT PIPES (36ML FLOW) | 1091KG | \$825 |
| SS1050 | 1050 SPIGOT PIPE (50ML FLOW) | 1420KG | \$1,089 |
| SS1200 | 1200 SPIGOT PIPES | 1920KG | \$1,200 |
| SS1350 | 1350 SPIGOT PIPES | | \$1,470 |
| SS1500 | 1500 SPIGOT PIPES | | \$1,740 |
| RR | EXTRA RUBBER RINGS AVAILABLE FOR PURCHASE | N/A | POA |



Pit cover



Trash screen



| Pit Covers and Trash Screens | | | |
|------------------------------|-----------------------------------|-----|----------------|
| STOCK CODE | DESCRIPTION | | PRICE (ex GST) |
| PC110 | PIT COVER 1080X1080 PIT | N/A | \$330 |
| PC120 | PIT COVER 1200x1200 PIT | N/A | \$440 |
| PC140 | PIT COVER 1400x1400 PIT | N/A | \$495 |
| PC170 | PIT COVER 1700x1700 PIT | N/A | \$605 |
| PC200 | PIT COVER 2300x2300 PIT | N/A | \$715 |
| PC260 | PIT COVER 2600x2600 PIT | N/A | \$1,320 |
| TS | TRASH SCREENS (TO FIT ABOVE PITS) | N/A | POA |

| Other | | | |
|------------|------------------------------------|-----|----------------|
| STOCK CODE | DESCRIPTION | | PRICE (ex GST) |
| RF4 | RUBBER FLAP 4mmTHICK EDPM X 1200 W | N/A | \$99 |
| HR | GALVANISED PIPE 1.3M STEPS | N/A | \$143 |
| SR | SILL RUBBER | N/A | \$9 |
| NG | GUIDE RUBBER | N/A | \$13 |
| HS | HISEAL 375gm | N/A | \$17 |



A few words from our customers...

“The delivery team always keeps you up to date with your delivery schedule and they’re honest with delivery times. They maintain contact with you and ring to organise delivery. The product turns up when they say it will and they place it exactly where you want it. I’m also conscious as a Murray Irrigation shareholder that the money goes back into the local irrigation industry.”

“We were very pleased with both the quality and the range of products MILCast offered, as well as the ability to custom-make components for our system. I was also impressed with MILCast’s ability to meet time schedules and its ability to be able to keep products rolling to keep our contractors going. I was so impressed that I also used MILCast products on my own farm.”

“I find the products very good quality, the service is excellent and the delivery is excellent.”



